

\$595,000 - 3027 S Peck Avenue 1, San Pedro

MLS® #SB19214658

\$595,000

3 Bedroom, 3.00 Bathroom, 1,786 sqft
Residential on 0 Acres

N/A, San Pedro, CA

Beautiful Condo situated in the Point Fermin area of San Pedro. This condo is very spacious with beautiful views of L.A. Harbor and Pacific Ocean.

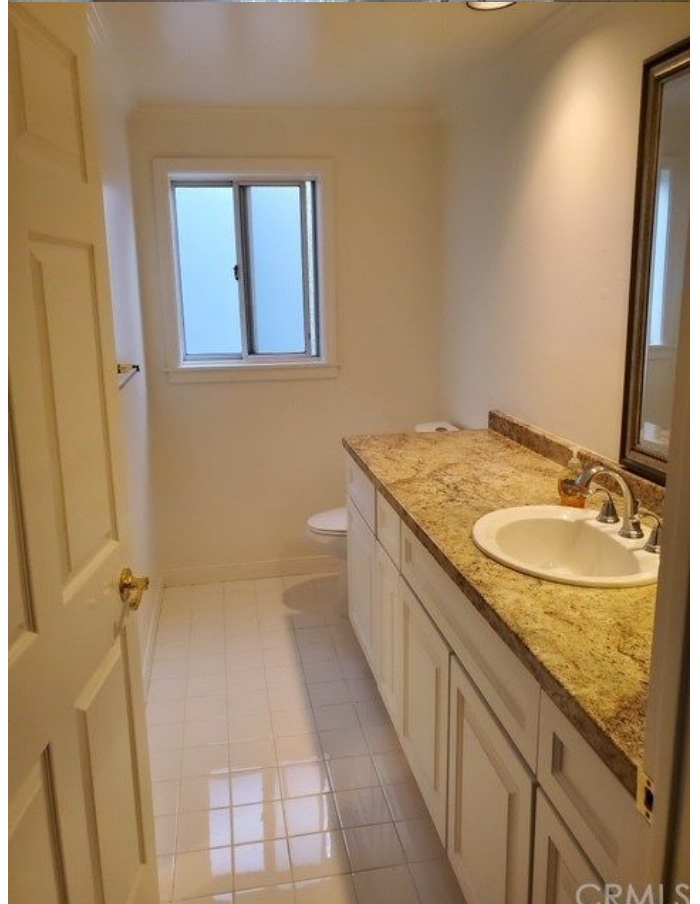
It is a townhouse plan with the Kitchen and dining living room on the second level along with one bathroom and laundry room. The first level consist of

3 spacious bedrooms and 2 baths. The master bedroom has a large attached bathroom complete with shower and tub. All the bedrooms have large mirrored closets with plenty of storage area. The condo has a stairwell also a elevator from the ground level parking lot. Its a very quiet building with 7 condos. All the neighbors all very quiet and help each other out. Please show to your buyers who want a turnkey condo with beautiful views and spacious living areas.

Built in 1990

Essential Information

MLS® #	SB19214658
Price	\$595,000
Bedrooms	3
Bathrooms	3.00
Full Baths	2
Half Baths	1
Square Footage	1,786
Acres	0.22



CRMLS

Year Built	1990
Type	Residential
Sub-Type	Condominium
Status	Pending

Community Information

Address	3027 S Peck Avenue 1
Area	Point Fermin (181)
Subdivision	N/A
City	San Pedro
County	Los Angeles
State	CA
Zip Code	90731

Amenities

Utilities	Cable Available, Electricity Available, Natural Gas Available, Sewer Connected, Water Connected
Parking Spaces	2
Parking	Assigned, Built-In Storage, Direct Garage Access, Driveway, Structure
# of Garages	2
View	Ocean View
Is Waterfront	Yes
Waterfront	Ocean Front
Pool	None

Interior

Interior Features	Turnkey, 2 Staircases, Balcony, Elevator, Granite Counters, Living Room Balcony, Open Floor Plan, Pantry, Phone System, Recessed Lighting, Storage Space
Appliances	Gas Dryer Hookup, Built In Range, Gas Oven, Gas Stove, Gas Water Heater, Ice Maker, Microwave, Water Line to Refrigerator
Heating	Central Furnace, Natural Gas, Fireplace
Cooling	Gas
Fireplace	Yes
Fireplaces	Living Room
# of Stories	2
Stories	Two

Exterior

Exterior Features	Lighting, Rain Gutters
Lot Description	0-1 Unit/Acre, Sprinkler System
Windows	Double Pane Windows

School Information

District	Los Angeles Unified
Middle	DANA
High	SANPED

Additional Information

Date Listed	September 10th, 2019
Days on Market	29
HOA Fees	295.00
HOA Fees Freq.	Monthly

Listing Details

Listing Agent	Rebecca Mcdonald(01046790)
Listing Office	Keller Williams Palos Verdes

Based on information from California Regional Multiple Listing Service, Inc. as of October 21st, 2019 at 4:07am PDT. This information is for your personal, non-commercial use and may not be used for any purpose other than to identify prospective properties you may be interested in purchasing. Display of MLS data is usually deemed reliable but is NOT guaranteed accurate by the MLS. Buyers are responsible for verifying the accuracy of all information and should investigate the data themselves or retain appropriate professionals. Information from sources other than the Listing Agent may have been included in the MLS data. Unless otherwise specified in writing, Broker/Agent has not and will not verify any information obtained from other sources. The Broker/Agent providing the information contained herein may or may not have been the Listing and/or Selling Agent.