

\$2,500 - 2224 W Imperial Highway 1, Hawthorne

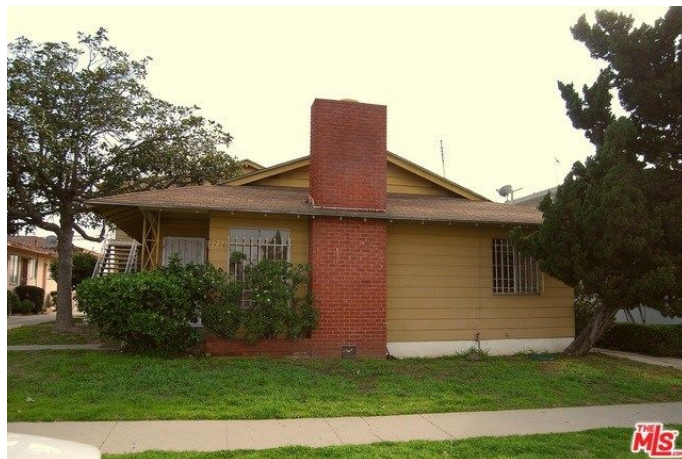
MLS® #19438436

\$2,500

3 Bedroom, 2.00 Bathroom, 1,600 sqft
Rental on 0 Acres

N/A, Hawthorne, CA

"MUST SEE LARGE OWNERS UNIT FOR LEASE". THIS BEAUTIFUL HAWTHORNE TRIPLEX BUILDING, FEATURES A UNIT WITH A LARGE LIVING ROOM WITH FIREPLACE AND DINING AREA, HARDWOOD FLOORS THROUGHOUT, A LARGE KITCHEN WITH NEW APPLIANCES, THREE EXTRA LARGE BEDROOMS, TWO BATHROOMS , AND A TWO CAR GARAGE.



Built in 1956

Essential Information

MLS® #	19438436
Price	\$2,500
Bedrooms	3
Bathrooms	2.00
Full Baths	2
Square Footage	1,600
Acres	0.15
Year Built	1956
Type	Rental
Sub-Type	Condominium
Style	Traditional
Status	Closed

Community Information

Address	2224 W Imperial Highway 1
Area	East Hawthorne (110)

Subdivision	N/A
City	Hawthorne
County	Los Angeles
State	CA
Zip Code	90250

Amenities

Parking	Garage - Two Door
View	No View
Pool	None

Interior

Appliances	Garbage Disposal, Water Line to Refrigerator, Refrigerator, Freezer, Dishwasher
Cooling	None
Fireplace	Yes
Fireplaces	Living Room

Additional Information

Date Listed	February 26th, 2019
Days on Market	2
Zoning	HAR3YY

Listing Details

Listing Agent	Darryl Keith Gallien(01706157)
Listing Office	Pacific Playa Realty

Based on information from California Regional Multiple Listing Service, Inc. as of August 19th, 2019 at 12:07pm PDT. This information is for your personal, non-commercial use and may not be used for any purpose other than to identify prospective properties you may be interested in purchasing. Display of MLS data is usually deemed reliable but is NOT guaranteed accurate by the MLS. Buyers are responsible for verifying the accuracy of all information and should investigate the data themselves or retain appropriate professionals. Information from sources other than the Listing Agent may have been included in the MLS data. Unless otherwise specified in writing, Broker/Agent has not and will not verify any information obtained from other sources. The Broker/Agent providing the information contained herein may or may not have been the Listing and/or Selling Agent.